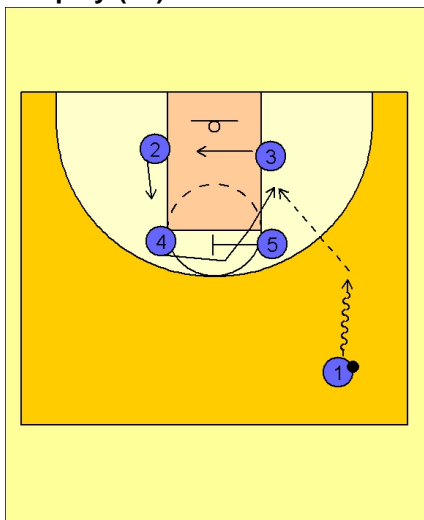




Set play (26)



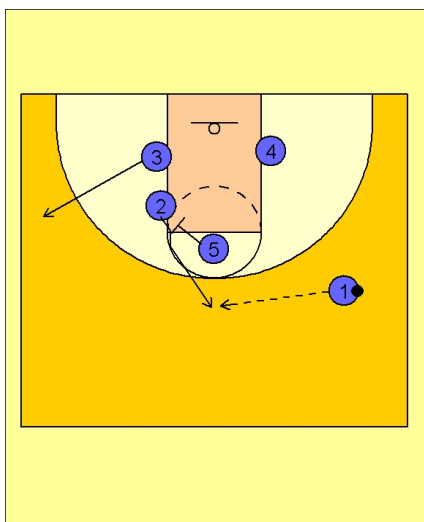
UCLA Set Play vs. Man Defense

Box set to begin.

#1 drives the ball up the right sideline.

#3 clears across to the other block. #5 screens across for #4. #2 starts to slide up the lane.

#4 curls off the screen from #5 looking to catch the ball on the right low block.

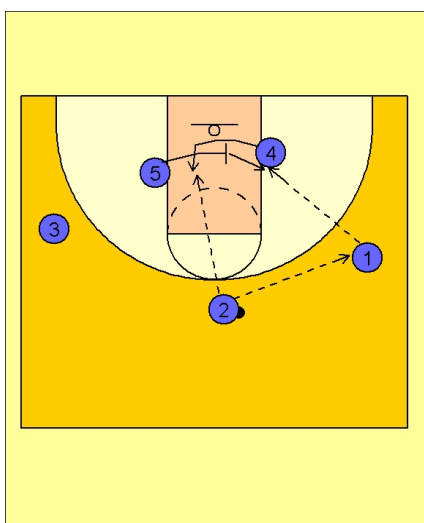


UCLA Set Play vs. Man Defense

If #4 does not receive the ball, #5 continues to screen and sets a screen for #2 breaking to the top.

#3 continues his cut and breaks out to the left wing.

#1 enters the ball on top to #2.



UCLA Set Play vs. Man Defense

Once #2 has the ball, #5 screens across for #4.

#2 can look to feed the ball inside as #4 curls under the screen or he can pass the ball to the right wing player #1, who can look inside to #5.